

# ECODRY 25 & 35 plus



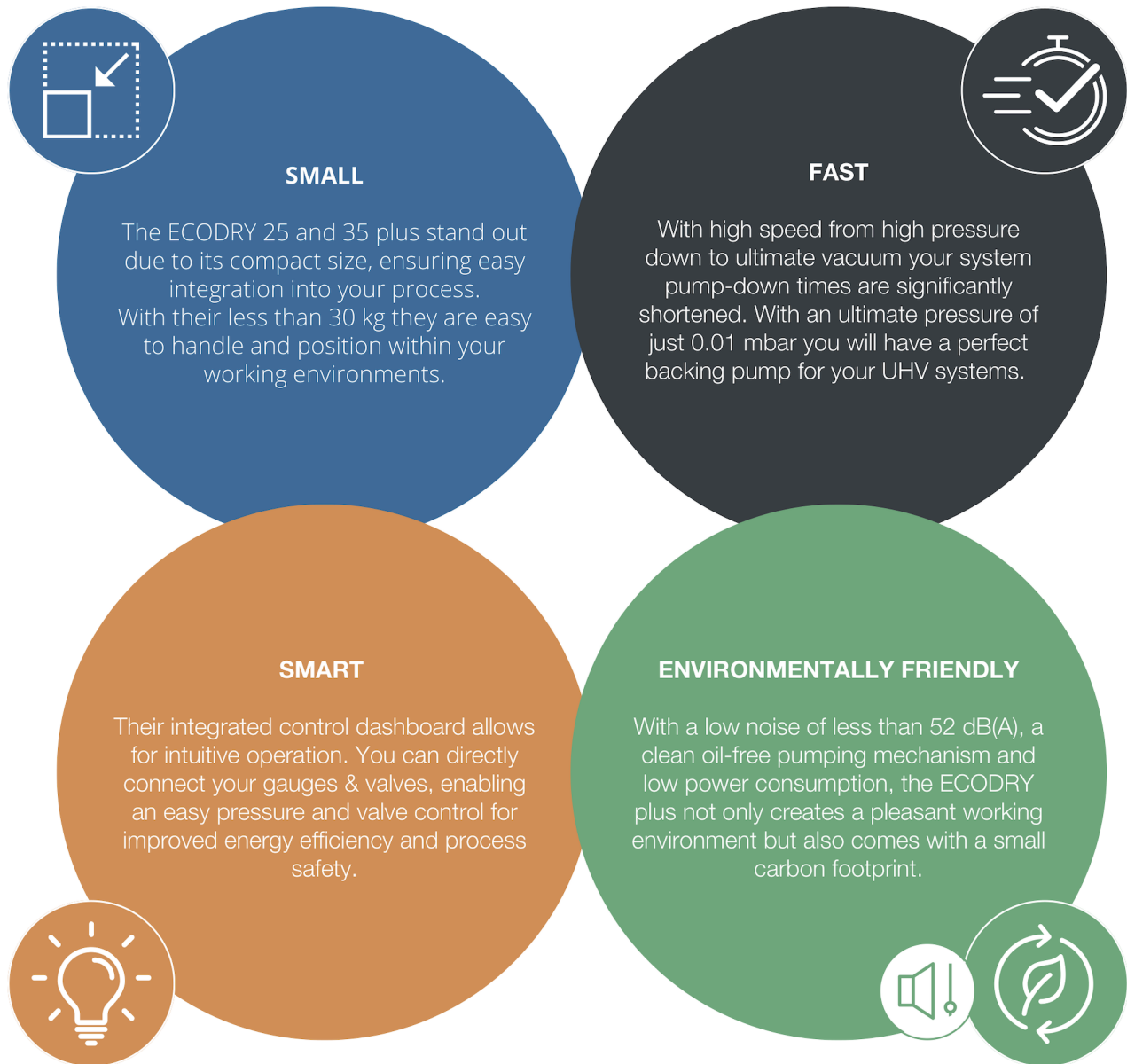
## Multistage roots vacuum pump

High performing compact vacuum pumps for clean applications



# ECODRY plus models with peak pumping speeds of 25 and 35 m<sup>3</sup>/h.

Enhance your vacuum application with the ECODRY plus dry multistage roots technology



Sterilization

Particle Accelerator

Helium Cryostats

**UHV Systems**

Vacuum Drying

**Leak Detection**

Surface Science

**Mass Spectrometry**

Space Simulation

Turbo Pump Backing

Glove Box

**Electron Microscopy**

# Intelligent pump control

The Integrated dashboard enables easy push-button control of pump operation. Front USB connector for data monitoring and pump configuration via our free and easy-to-use LEYASSIST software.

With a wide voltage range the pumps are suited for consistent operation in all parts of the world.



For improved power consumption and even lower noise emission a gauge can be connected to the pump for automatic standby mode when pressure is low enough to run the turbo pump.

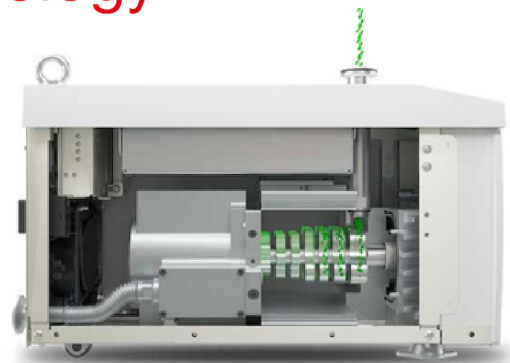


# Dry multistage roots technology

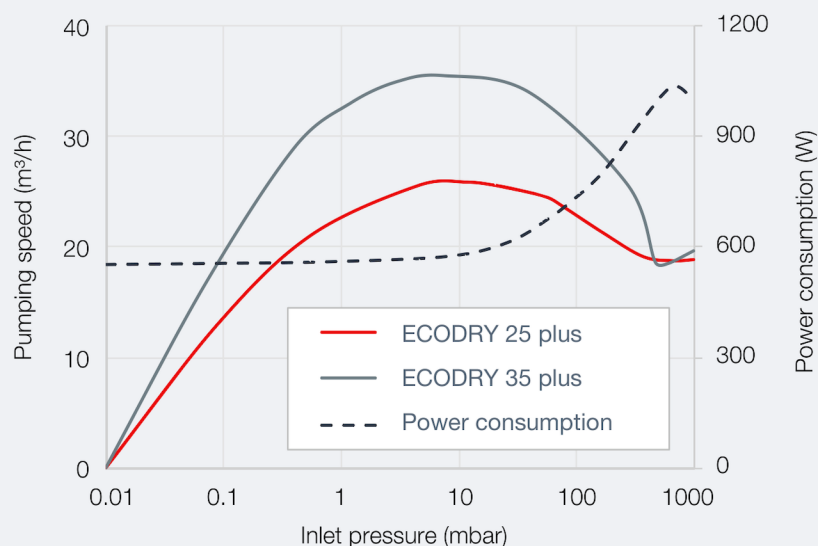
The ECODRY 25 & 35 plus come with a dry sealed, contact free mechanism.

Thanks to this, the pumping chamber is clean and free of oil. No wear and no oil exchange required means those pumps are maintenance-free for up to five years.

The pumps rotors are turning with high speeds contact-free so you can enjoy a consistent and smooth operation with low noise and vibration.



## Pumping speed



## Technical data

	ECODRY 25 plus	ECODRY 35 plus
Peak pumping speed	25 m <sup>3</sup> /h	35 m <sup>3</sup> /h
Typical ultimate pressure	0.01 mbar	
Maximum continuous inlet pressure	1013 mbar	
Maximum exhaust pressure	200 mbar (g)	
Inlet/exhaust flange	DN 25 ISO-KF	
Noise at ultimate pressure	52 dB(A)	
IP class	IP20	
Leak tightness	< 1 x 10 <sup>-6</sup> mbar l/s	
Voltage	100-127V/200-240V (switchable) 50/60 Hz	
Power at ultimate pressure	600 W	
Weight	29 kg	
Dimensions	494 x 248 x 304 mm (LxWxH)	
Ambient conditions	+5 to +40°C Max. 3000 m	
Part numbers	162025V001	162035V001

## Accessories

	Part number
Mounting kit	162800A001
Gas ballast blank plug	141100A01
Purge gas adapter (with restriction)	141100A03
Purge gas adapter (no restriction)	141100A02
Inlet Screen DN 25 ISO-KF	E41170206
DSUB9/USB Adapter for X104 interface	161820USB
USB connection cable A/B	800110V0180
SECUVAC DN25 KF 24V inlet valve	215065
SECUVAC connection cable	800103V0040
Mains cable EU (Schuko plug)	161810EU
Mains cable UK (UK-BS 1363 plug)	161810 K
Mains cable US (115 V), NEMA 5-15 P plug	141103US
Mains cable US (220 V), NEMA 6-15 P plug	161810US
Mains cable China/Australia, CN GB 2099 plug	161 810 CN



Pioneering products. Passionately applied.