



VARODRY VDi System

With integrated VAControl CAB
for smart pump down



Smart systems with integrated VAControl CAB!



Easy maintenance:

- Easy access to all pumps and parts at one place
- Easy belt access, no enclosure for quick maintenance
- Long bearing lifetime



Smart control:

- Intelligent software functions
- One controller to manage all processes



Energy efficient:

- Vacuum on demand
- Additional energy savings and equal wear with the Energy Saver Kit



Process capable:

- Choose from different booster combinations
- With gas ballast and purge to adapt to different process needs
- Additional filter option for dusty applications



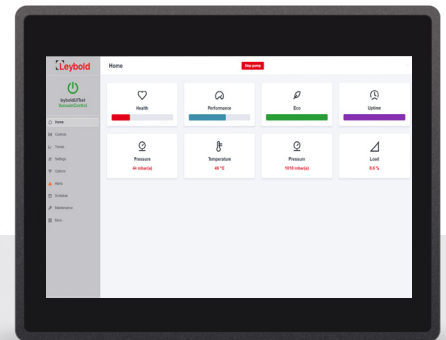
Low TCO:

- Low maintenance cost due to low spare part needs
- Extended maintenance intervals due to equal wear with Energy Saver Kit



Performance Driven:

- Strong pumping speed with additional booster power
- Performance on demand via intelligent software functions



VARODRY VDi Systems for smart pump down:

- Extra Roots to boost pump down
- Special software features for advanced application needs
- Targeted on end pressure

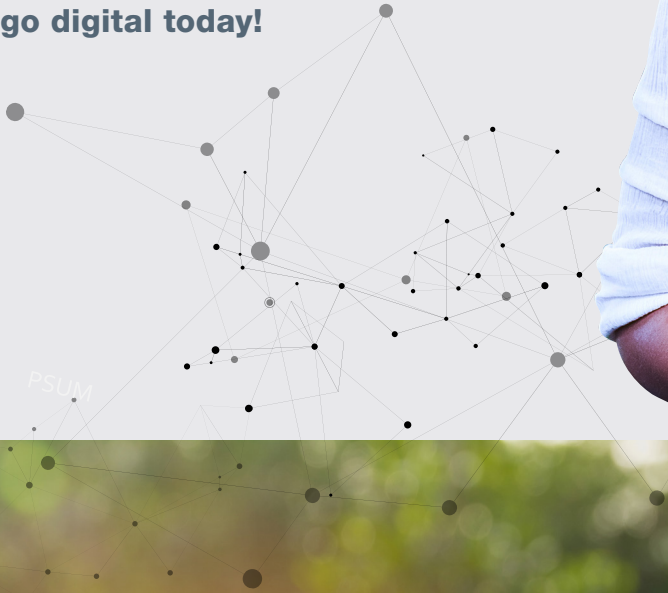
Versions:

- VD 200i+ booster
- VD 400i+ booster
- VD 400i+ Energy Saver kit for advanced energy savings

Smart control with VAControl CAB:

- Standardized products - ready-to-order!
- Intelligent pump systems with VAControl CAB
- One controller to manage all processes
- Pump data available from anywhere:
 - Local, remote or cloud connectivity
 - Data recording for best production quality
- Maintenance and service alerts for higher uptime
- Functions to enhance user experience:
 - Starts / Stops of multiple pumps
 - Pressure control
 - Cloud communication via GENIUS
- Direct control via various devices

...go digital today!



Smart pump down with VDi:

- More flexibility to adapt to your process needs
- Reduced process and maintenance costs
- Dry solution with higher pumping speed
- Reduced energy consumption to fulfill sustainability goals

Energy saver kit for VD 400i+

Create more value with intelligent software functions:

- Extra energy savings with the energy saver kit
- Significant cost of ownership reductions with intelligent energy saving procedures
- Allows to switch off one **VARODRY** to:
 - Save on energy
 - Save on running time to extend maintenance intervals
- Pump alternation for equal wear
- Pressure dependent and automatically controlled by the intelligent software
- Perfectly suited for all heat treatment applications



Features & applications

Target applications for VDi:

- Heat Treatment
- Coating Applications
- Drying Applications



Technical data

| | | 50 Hz | | | | 60 Hz | | | |
|---|---------|-------------------|--------------|-------------------|-------------------|-------------------|--------------|-------------------|-------------------|
| | | VD 200i+ | | VD 400i+ | | VD 200i+ | | VD 400i+ | |
| | | WSU 501 | WSU 1001 | WSU 1001 | WSU 2001 | WSU 501 | WSU 1001 | WSU 1001 | WSU 2001 |
| Maximum pumping speed (w/o gas ballast) | m³/h | 400 | 780 | 850 | 1660 | 480 | 910 | 1000 | 1940 |
| Ultimate pressure w/o gas ballast | mbar | 0,001 | | | | | | | |
| Max. permissible outlet pressure (rel. to ambient) | mbar | 200 | | | | | | | |
| Max. permissible inlet pressure | mbar | 1200 | | | | | | | |
| Water vapor tolerance with gas ballast and inlet & outlet purge | mbar | 20 | | | | | | | |
| Water vapor capacity with gas ballast | kg/h | 6,9 | | 13,9 | | 6,9 | | 13,9 | |
| Permissible ambient temperature | °C | 0 to +40 °C | | | | | | | |
| Purge gas consumption, inlet side | slm | 2,5-5 | | 5-10 | | 2,5-5 | | 5-10 | |
| Purge gas consumption, motor side | slm | 7,5-16 | | 15-32 | | 7,5-16 | | 15-32 | |
| Purge gas supply pressure | bar (g) | 2-4 | | | | | | | |
| Nominal motor power 50Hz / 60Hz | kW | 9,4 | | 16,5 | | 9,4 | | 17,5 | |
| Dimensions (L x W H) | mm | 1410 x 925 x 1503 | | 1410 x 925 x 1772 | 1410 x 925 x 1896 | 1410 x 925 x 1503 | | 1410 x 925 x 1772 | 1410 x 925 x 1896 |
| Inlet / outlet connection | | DN63 / DN80 | DN100 / DN80 | | DN160 / DN80 | DN63 / DN80 | DN100 / DN80 | | DN160 / DN80 |

Versions

| | |
|-------------|--|
| 111200VDi01 | VD 200i+, booster ready, 50 Hz, 200/400V |
| 111200VDi02 | VD 200i+, booster ready, 60 Hz, 230/460V |
| 111200VDi03 | VD 200i+, booster ready, 60 Hz, 200/380V |
| 111400VDi01 | VD 400i+, booster ready, 50 Hz, 200/400V |
| 111400VDi02 | VD 400i+, booster ready, 60 Hz, 230/460V |
| 111400VDi03 | VD 400i+, booster ready, 60 Hz, 200/380V |
| 111005VDi01 | Piping DN63 for WSU 501 for VD 200i+ |
| 111005VDi02 | Piping DN63 for WSU 1001 for VD 200i+ |
| 111005VDi03 | Piping DN63 for WSU 1001 for VD 400i+ |
| 111005VDi04 | Piping DN63 for WSU 2001 for VD 400i+ |
| 111005VDi05 | Energy Saver Kit for VD 400i+ |

Systems compatibility

| | | |
|----------|----------|-------------------------------|
| VD 200i+ | WSU 501 | Piping DN63 for WSU 501 |
| | WSU 1001 | Piping DN63 for WSU 1001 |
| VD 400i+ | WSU 1001 | Piping DN63 for WSU 1001 |
| | WSU 2001 | Piping DN63 for WSU 2001 |
| | | Energy Saver Kit for WSU 2001 |